



ENFit: Promoting patient safety through a unique enteral-specific design

Until recently, fluid delivery systems were equipped with universal connectors. This made them compatible with each other, creating a risk of misconnection. To reduce this risk, ENFit was created in 2018 as part of **a global collaborative design initiative**. ENFit is an enteral-specific system that safeguards connections between administration sets, feeding tubes and medication syringes. It helps **ensure that only enteral nutrition can be delivered through enteral feeding systems**.

This article explains the benefits of ENFit and provides **resources to ease the transition** to the new standard.

ENFit helps prevent tubing misconnection to promote patient safety.

ENFit is a unified global standard fully compliant with ISO 80369-3.

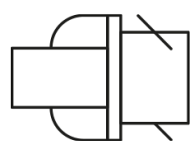
Resources are available to help healthcare providers manage the transition to ENFit.

Legacy connectors can lead to accidental misconnections

Patients may be connected to several delivery systems at once, such as an enteral feeding system, intravenous (IV) line, tracheostomy tube or peritoneal catheter. Small-bore connectors link these delivery systems together. However, some connectors are universal and inter-compatible. This means that a medical delivery device could be accidentally connected to the wrong system, for example an enteral feeding line to an IV line. Such misconnections may put patients at risk and can be life-threatening.

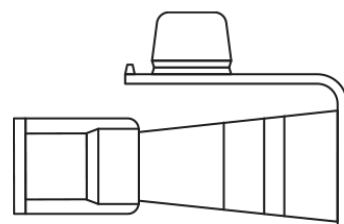
Legacy connectors

Oral/Luer



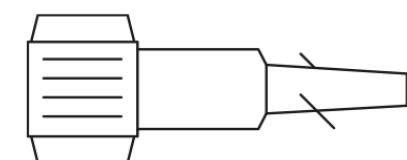
The most widely used connector in multiple delivery systems. It allows connection between different types of therapeutic devices with the risk of misconnection.

Stepped and funnel type

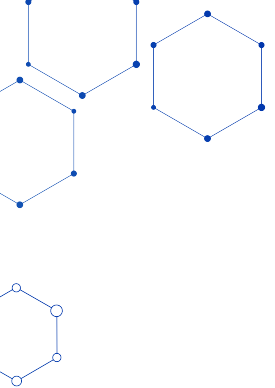


They are compatible with drainage or suction systems. Drainage tubes utilise a funnel connector which can also be compatible with ENLock connectors prevalent in older enteral feeding tubes.

ENLock



Connection system compatible with enteral feeding tube connections, but incompatible with IV connections. The ENLock predates the industry standard ENFit.

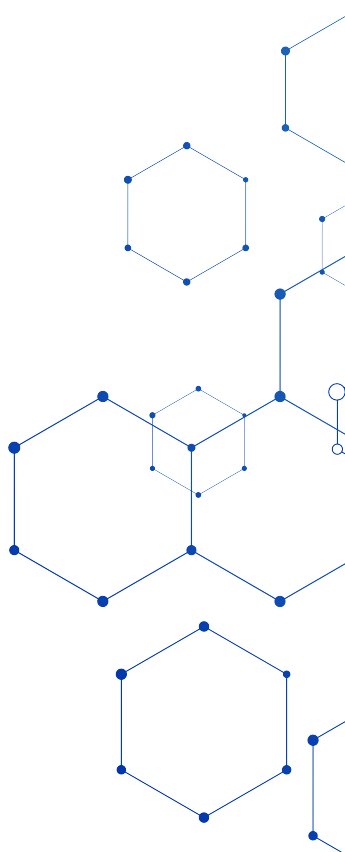


ENFit reduces the risk of misconnection

As the risk of misconnections began to attract attention, technical, clinical and regulatory experts came together to establish the ISO 80369-3 standard. This led to ENFit, which **promotes safe, optimal delivery of enteral feeding** using purpose-made connectors that help avoid accidental misconnections.

ENFit is a unified global standard for enteral connection between medication ports, medication syringes, administration sets and feeding tubes. These new connectors are set to:

- ✓ Ultimately replace the legacy connectors currently in use.
- ✓ Prevent accidental misconnections between different systems **to promote patient safety**.
- ✓ Ensure **compatibility between manufacturers and between enteral medical devices** (pump and gravity administration sets, feeding tubes, syringes).
- ✓ **Promote optimal delivery** thanks to a locking feature that ensures a secure, leak-free connection.



Managing the transition to ENFit

The transition to this new standard can be a challenge for healthcare professionals. There is a knock-on effect on multiple areas of organisations, as well as a need for thorough inventory management, staff training and educational resources.

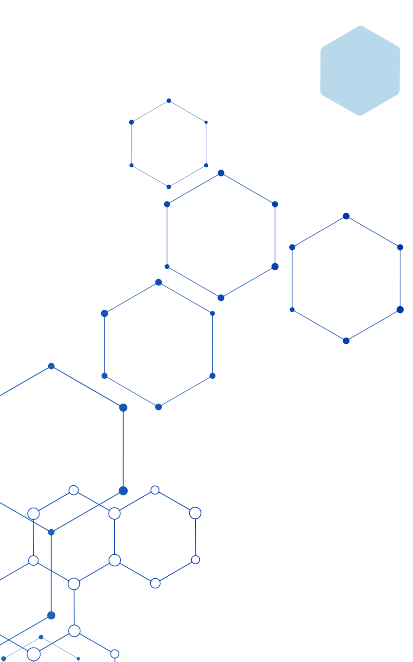
Solutions have been developed to ease this transition:

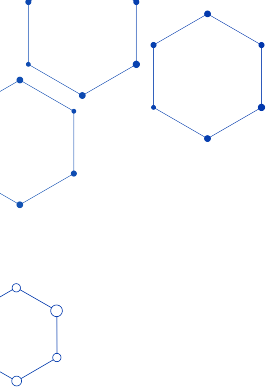
- **Compat Adapter:**
A full range of enteral adapters is available to facilitate the connection of administration sets, feeding tubes and syringes. Visit the [Compat Adapter page](#) for more information.

Compat[®] Adapter



- **Compat ENFit Transition Sets:**
Compat Pump and Gravity Administration Sets are available with both ENFit and legacy connectors to promote the use of ENFit while still ensuring compatibility with other devices. This makes it possible to use existing legacy stock during the transition phase.





Compat Administration Sets are available with ENFit connectors and removable legacy adapters.

Compatibility:

- Enteral feeding tubes: ENFit, ENLock, Funnel
- Syringes: ENFit, ENLock, Oral, Luer



Compat nasogastric tubes with dual connectors so that a single tube can be used for enteral feeding and gastric drainage.



Dual-lumen Jejunal Feeding Tube with Integrated Gastric Drainage



GESDA Resources :

The Global Enteral Device Supplier Association helps develop international standards in medical device tubing connectors. Educational webinars, transition checklists, toolkits and other resources are available on their StayConnected website.

Visit [StayConnected.org](https://www.stayconnected.org) for additional ENFit resources.



Do you need more
information about
ENFit?

Contact us

